



a fair trade company  
manufacturing and  
exporting handicrafts



warp and weft

product presentation

**autumn winter**

**2018 - 2019**



# warp and weft

With honour, we present full new collection of our Autumn Winter products for the year 2018 - 2019.

“Warp and Weft” suggests an underlying structure of something; this can be a persons’ character, a relationship we build with our neighbours or a way of working. Our artisans’ weaving of different materials create new products; baskets, rugs, fabrics and handmade papers; each of them are a new weaving of fine materials. The weaving is encouraged by your interest, feedback and purchase. We value this a lot and endeavour to strengthen this relationship with you, in order to create strong and beautiful patterns.

We trust you enjoy this catalogue and look forward to be in contact with you.

Best regards,  
Prokritee Team

## contact

For information, prototypes and orders, please contact us:  
The sender or Swapan K. Das  
House # 1/1, Asadgate Road, Block-A  
Mohammadpur, Dhaka, Bangladesh  
+88 02 5815 3405  
contact@prokritee.com www.prokritee.com



All prices in this catalogue are fixed for the coming six months; after March 2018 they might fluctuate according to currency exchange rate and material prices.

# contents

|                                      |           |
|--------------------------------------|-----------|
| <b>our work</b>                      | <b>5</b>  |
| <b>accessories and personal care</b> | <b>7</b>  |
| bags and purses                      | 9         |
| natural soap                         | 11        |
| special gifts                        | 13        |
| <b>home decor</b>                    | <b>17</b> |
| wall hangers                         | 18        |
| candle holders                       | 19        |
| stools and tables                    | 21        |
| baskets                              | 23        |
| lampshades                           | 35        |
| table linens                         | 38        |
| rugs                                 | 39        |
| ornaments                            | 41        |
| garlands                             | 57        |
| <b>stationery</b>                    | <b>61</b> |
| greeting cards                       | 63        |
| journals                             | 75        |
| gift boxes                           | 81        |
| gift bags                            | 83        |
| gift tags                            | 85        |
| wrapping paper                       | 87        |
| <b>terms and conditions</b>          | <b>88</b> |





# our work



## Natural materials

The name of our company is Prokritee which means nature in Bengali. For our products we use renewable sources of materials, such as recycled sari, jute, silk and paper as well as natural fibres and leaves. All colouring is done with AZO free and natural dyes.

## Fair wages

Our vision is that all women in rural Bangladesh can live in dignity and are valued as contributing members of the society. Our focus is to develop the social and economic capacity of these women by creating productive employment opportunities and sustainable linkages to world markets. Giving them fair wages and good working conditions are the base.

## From design to shipping

We have a "Packing and Export Shipping" section in Dhaka. This section deals with quality checking, packaging, documentation and shipping for export. Our producers are committed to produce right quality products on time. We ensure your customise product design and smooth shipments.

Photo © Dave Klassen

< artisan making a throw at Sacred Mark Enterprise





Our accessories and personal care products are vibrant with natural colours and reflect traditional design.



accessories and  
personal care





# bags and purses



**1. Kantha bag**  
Recycled sari with leather handle  
Code: SHP PP 31/2/17  
38 x 40 cm

**2. Kantha bag**  
With leather handle  
Code: SHP PP 32/2/17  
38 x 40 cm

**3. Draw string bag**  
Jute  
Code: SHP PP 41/2/17  
34 x 16 cm

**4. Draw string bag**  
Jute  
Code: SHP PP 42/2/17  
34 x 16 cm

**5. Coin purse**  
Jeans fabric  
Code: SME 0318  
18 x 10 cm

**6. Kantha purse**  
Code: SHP PP 41/2/17  
28 x 15 cm





Photo © Dave Klassen

# natural soap

## Our scents:

Simply unscented  
Coconut lavender  
Cinnamon clean  
Ginger neem  
Chai massala  
Neem orange  
Lemon ritha  
Oats  
Coffee  
Jumble

## 1. Gift set

Wood and soap  
Code: SME 0334  
7.5 x 8.5 cm





# special gifts



1

2

3

4

5

6

7

## 1. Key holder

Jute and metal hook  
Code: BE 720 N, BE 720 O, BE 720 B  
12 cm long

## 2. Mikado game

Set of 25 sticks  
Code: BE 714  
20 cm long

## 3. Airplane toy

Wood  
Code: NKC AW 18-19-01  
19 x 23 cm

## 4. Key ring (set of three)

Leather  
Code: SHP PP 40/2/17  
7.5 x 7.5 cm

## 5. Key ring

Leather  
Code: SHP PP 39/17  
9 x 3 cm

## 6. Shoe

Leather  
Code: SHP PP 33/2/17  
28 x 12 cm

## 7. Baby shoe

Leather  
Code: SHP PP 36/2/17  
12 x 5.5 cm



**1. Sheep broche**  
Cotton  
Code: HH CT\_0250  
7 x 5.5 cm

**2. Bird broche**  
Cotton  
Code: HH CT\_0251  
6 x 5 cm

**3. Giraffe broche**  
Cotton  
Code: HH CT\_0252  
8 x 6 cm

**4. Cow broche**  
Cotton  
Code: HH CT\_0253  
8 x 6.5 cm

**5. Snail broche**  
Cotton  
Code: HH CT\_0254  
7 x 4 cm

**6. Monkey broche**  
Cotton  
Code: HH CT\_0255  
7 x 6.5 cm





All our home decor items are made out of 100 % natural ingredients and coloured with AZO free dyes.



home decor



# wall hangers

## 1. Leaf wall hanger

Wire and recycled sari  
Code: SME 0331  
16.5 x 15 cm

## 2. Leaf wall hanger

Wire and recycled sari  
Code: SME 0329  
14 x 6 cm

## 3. Leaf wall hanger

Wire and recycled sari  
Code: SME 0330  
16.5 x 15 cm

## 4. Star wall hanger

Wire and recycled sari  
Code: SME 0327  
13 x 15 cm

## 5. Hat wall hanger

Wire and recycled sari  
Code: SME 0328  
16 x 17 cm



# candle holders

## 1. Candle holder

Glass, jute  
Code: BE 715-B  
15 cm dia x 55 cm high

## 2. Candle

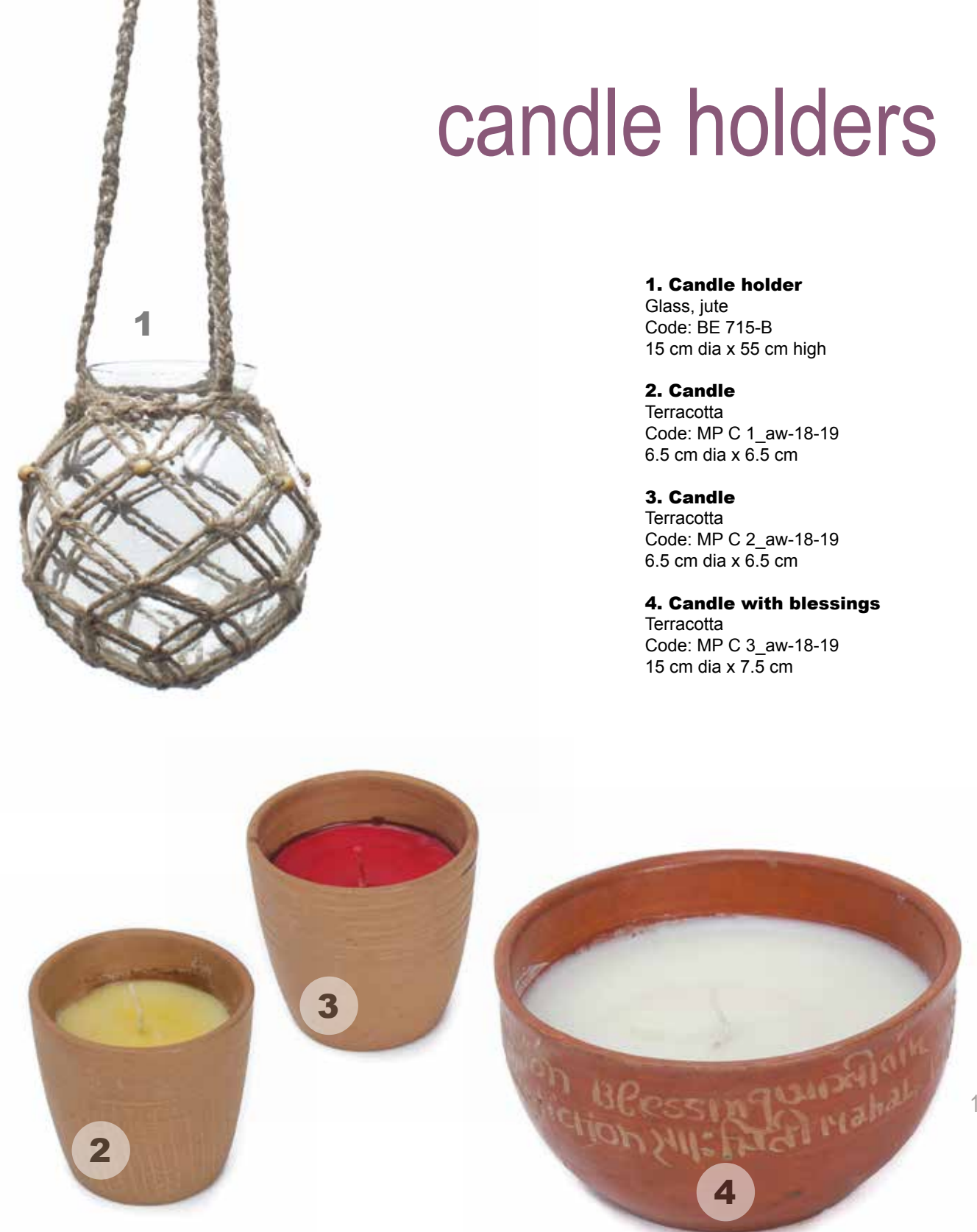
Terracotta  
Code: MP C 1\_aw-18-19  
6.5 cm dia x 6.5 cm

## 3. Candle

Terracotta  
Code: MP C 2\_aw-18-19  
6.5 cm dia x 6.5 cm

## 4. Candle with blessings

Terracotta  
Code: MP C 3\_aw-18-19  
15 cm dia x 7.5 cm





# stools and tables

**1. Stool** (Stackable)  
Iron and recycled sari  
Code: NKC-AW 18-19-03  
35 x 40 x 40 cm

**2. Chair** (Stackable)  
Iron and recycled sari  
Code: NKC-AW 18-19-02  
40 x 40 x 45, back 67 cm high

**3. Storage table**  
Iron and recycled sari  
Code: NKC-AW 18-19-04  
30 x 40 x 76 cm

**4. Storage table**  
Iron and recycled sari  
Code: NKC-AW 18-19-05  
35 x 76 cm





# baskets



**1. Easter basket**  
Kaisa grass and recycled sari  
Code: HH \_ EB \_ 0367  
9 x 16 cm

**2. Basket** (set of two)  
Recycled fabric and wool  
Code: HH \_ EB \_ 0367  
7 x 15 dia cm, 6 x 11 dia cm

**3. Basket**  
Hogla, jute  
Code: BHP 034  
30 x 20 x 13 cm

**4. Basket**  
Water haycinth, metal and recycled t-shirt  
Code: TC 485  
26 x 28 x 36 cm

**5. Basket** (set of three)  
Water haycinth, cane and recycled t-shirt  
Code: TC 484  
28 x 28 x 32 cm,  
20 x 20 x 25 cm,  
16 x 16 x 21 cm





3

4

5

6

**1. Basket** (set of three)  
Hogla  
Code: TC - 481  
24.5 x 16.5 x 10.5 cm

**2. Tray** (set of four)  
Hogla  
Code: HH -RB- 0544  
32 dia x 12,  
28 dia x 10,  
22 dia x 8,  
16 dia x 8 cm

**3. Basket**  
Hogla  
Code: BHS-033  
20 dia x 20 cm

**4. Basket**  
Hogla  
Code: BHS-030  
20 dia x 20 cm

**5. Basket**  
Hogla  
Code: BHS-031  
20 dia x 20 cm

**6. Basket**  
Hogla  
Code: BHS 032  
20 dia x 20 cm

**7. Tray** (set of two)  
Hogla  
Code: BHS-028  
39 dia x 9 cm,  
34 dia x 7 cm







**1. Magazine basket**

Hogla  
Code: BHS 039  
30 x 30 cm

**2. Basket** (set of three)

Hogla  
Code: BHS 029  
36 x 28 cm

**3. Basket** (set of two)

Hogla  
Code: BHS-041,  
55 x 40 x 40 cm  
43 x 32 x 35 cm

**4. Doll basket**

Hogla  
Code: BHS-044  
Dia 40 x 30, H 25 x 10 cm

**5. Basket**

Hogla  
Code: BHS-038  
50 dia x 52 cm

**6. Basket**

Hogla  
Code: BHS-038  
40 x 32 x 36 cm





**1. Basket**  
Hogla  
Code: BHP -6036  
30 x 30 x 25 cm

**2. Basket**  
Hogla  
Code: BHP -6035  
30 x 30 x 25 cm

**3. Basket**  
Hogla  
Code: HH \_ RB \_ 0540  
44 x 34 x 32 cm

**4. Basket**  
Hogla  
Code: HH \_ RB \_ 0539  
70 x 40 x 20 cm

**5. Laundry basket**  
Hogla  
Code: HH \_ RB \_ 0541  
50 dia x 50 cm

**6. Laundry basket**  
Hogla  
Code: HH \_ RB \_ 0541  
80 x 48 x 46 cm





**1. Lampholder**  
Bamboo with glass  
Code: KP 1530  
15 dia x 23 cm



**2. Basket**  
Pathi grass  
Code: TC 482  
17 x 17 x 17 cm

**3. Hand bag**  
Pathi Grass  
Code: TC 490  
15 x 11 x 16 cm



**4. Basket**  
Hogla  
Code: BHS 036  
22 x 15 x H 13 cm

**5. Open Weaving basket**  
Hogla  
Code: HH \_ RB \_ 0528  
21 x 21 x 21 cm

**6. Open Weaving basket** (set of 2)  
Hogla  
Code: HH \_ RB \_ 0529  
24 x 24 x 24 cm, 21 x 21 x 21 cm



**6**



**1. Basket**

Natural pathi grass  
Code: BHP 6022  
30 x 10 x 10 cm

**2. Basket**

Water hyacinth  
Code: BHP 6022-A  
30 x 10 x 10 cm

**3. Basket** (set of 2)

Water hyacinth with metal frame  
Code: BHP - 6021  
24 x 13 x 12 cm

**4. Partition basket**

Water hyacinth with metal frame.  
Code: BHP 6027  
12 x 12 x 36 cm

**5. Basket**

Water hyacinth, wire frame  
Code: BHP 6021-A  
24 x 13 x 12 cm

**6. Basket**

Water hyacinth  
Code: TC 518  
20 x 10 x 8 cm





# lampshades



1



2



3



4



5

## 1. Macrame lampshade

With jute and bamboo ring  
Code: BE-719  
40 dia x 32 cm

## 2. Crocheted lampshade

Jute  
Code: BE-719-C  
18 dia x 36 cm

## 3. Lampshade

Cane and pathi  
Code: TC - 479  
35 dia x 25 cm

## 4. Lampshade

Banana bark/fibre with twine  
Code: BNF-3399  
227.5 x 27.5 x 25 cm top

## 5. Lampshade

Banana bark and twine  
Code: BNF-3398  
32 dia x 36 cm







1



2



3



4



5



6

**1. Lampshade**  
Batik fabric with silk paper  
Code: BNF 3401  
25 cm dia x 25 cm

**2. Mood lamp**  
Paper and bamboo  
Code: SHP PP 23/2/17  
17.5 x 33 x 33 cm

**3. Mood lamp**  
Batik fabric with silk paper  
Code: BNF 3400  
21 dia x 36 cm

**4. Lampshade**  
Multicolour bead shade  
Code: RBC 368  
34 cm dia x 22 cm

**5. Lampshade**  
Multicolour bead shade  
Code: RBC 369  
25.5 dia x 21.5 cm

**6. Lampshade**  
Multicolour bead shade  
Code: RBC 370  
40 dia x 26 cm



# table linens

**Table linen** (set of seven items)

Cotton and batik

Code:

BNF 3454 blue

BNF 3453 red

BNF 3456 yellow

BNF 3455 green

one table cloth 202 x 157 cm

two place mats 46 x 33 cm

two napkins 46 x 46 cm

two rings 4 cm dia

one box 20 x 27 x 5.5 cm



# rugs

**1. Rug**

Jute  
Code: TC 486  
120 x 40 cm

**2. Placemat**

Recycled t-shirts  
Code: TC 478  
40 x 30 cm

**3. Rug**

Jute  
Code: TC 489  
90 x 60 cm





# ornaments



## 1. Diamond (set of three)

Jute paper  
Code: BNF 3467  
9 x 7 cm

## 4. Paper ornament (set of six)

Handmade paper  
Code: JE-5344  
4 cm dia

## 5. Paper decoration (set of three)

Handmade paper  
Code: BHP 3394

## 6. Hanging paper ball

Handmade paper  
Code: BHP 3403  
5.5 cm dia

## 7. Hanging decoration (set of two)

Handmade paper  
Code: BHP 3406  
8.5 x 5.5 cm

## 8. Hanging paper ball (set of three)

Handmade paper  
Code: BHP 3404-B  
5.5 cm dia





1



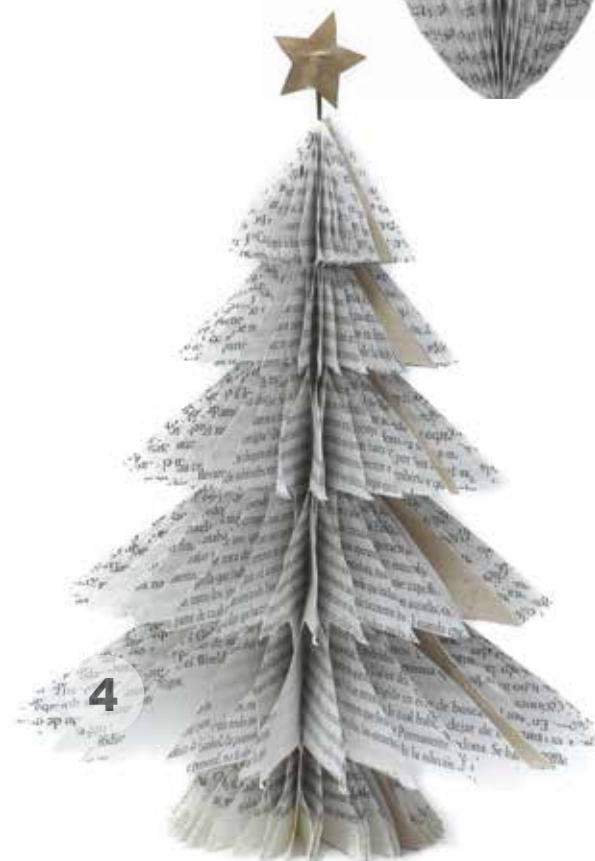
2



3



6



4



5



7

**1. Christmas ball**  
Recycled paper  
Code: BHP 3408  
12.5 cm dia

**2. Christmas ball** (Set of two)  
Recycled paper  
Code: BHP 3409  
6.5 cm dia

**3. Christmas ball**  
Recycled paper  
Code: BHP 3410  
10 dia x 5 cm

**4. Christmas tree**  
Recycled paper  
Code: BHP 3407  
23 cm

**5. Christmas tree** (with box)  
Recycled paper  
Code: BHP 3382  
26 cm

**6. Christmas ball**  
Recycled paper  
Code: BHP 3411  
10 x 5 cm

**7. Christmas stars** (set of three)  
Recycled newspaper  
Code: BHP 3393  
several





**1. Star** (set of three)  
Batik fabric with filling  
Code: BNF 3446  
9 x 9 cm

**2. Deer** (set of three)  
Batik fabric with filling  
Code: BNF 3448  
8 x 8 cm

**3. Tree** (set of three)  
Batik fabric with filling  
Code: BNF 3447  
15 x 7 cm

**4. Bird** (set of three)  
Batik fabric with filling  
Code: BNF 3450  
12 x 8 cm





### 1. Christmas balls

Recycled sari  
Code: JE- 5329 M  
10 cm dia

### 2. Christmas balls (set of four)

Cotton fabric, jute paper  
Code: JE-5330  
10 cm dia

### 3. Christmas tree (set of five)

Silk paper  
Code: BHP 3397  
8 dia x 12 cm high

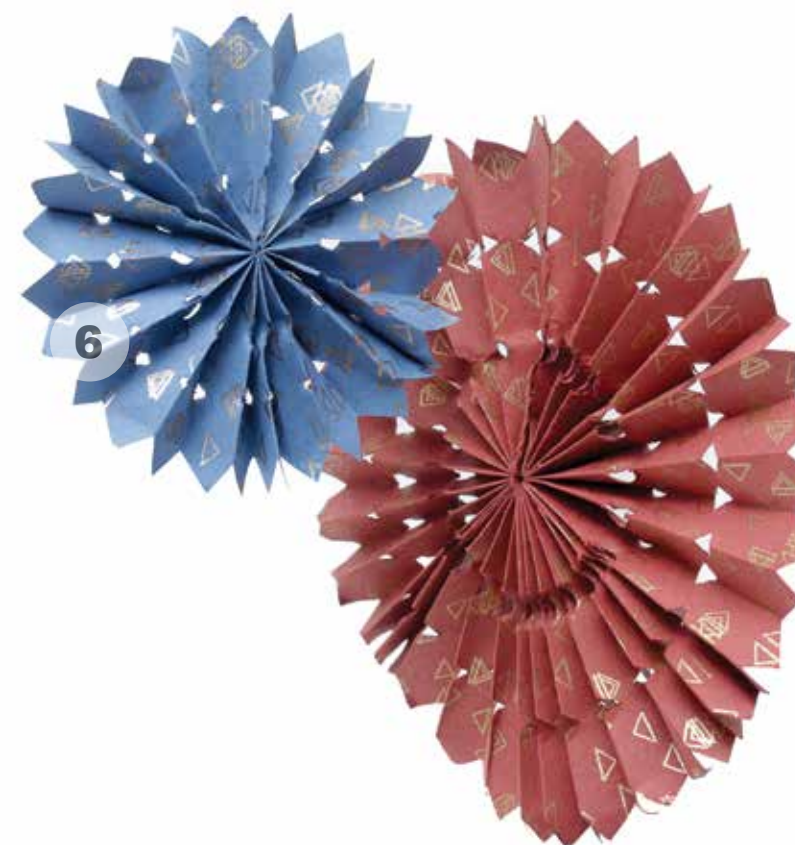
### 4. Christmas cracker

Silk paper  
Code: JE 5322  
9 cm high

### 5. Leaf decoration (set of twelve)

Handmade paper  
Code: JE-5334  
14 cm high





**1. 3D Heart**  
Wire and recycled sari  
Code: SME-0324  
12 x 10 x 5 cm

**2. 3D Alphabet**  
Wire and recycled sari  
Code: SME-0321  
12 x 10 x 5 cm

**3. 3D Star covered**  
Wire and recycled sari  
Code: SME-0324  
12 x 12 x 5 cm

**4. 3D Star**  
Wire and recycled sari  
Code: SME-0322  
12 x 12 x 5 cm

**5. Love tree**  
Wire and recycled sari  
Code: SME-0332  
28 x 49 cm

**6. Paper decoration** (set of three)  
Code: BHP 3384  
19 cm dia  
16 cm dia  
12 cm dia

**7. Decorative ornament** (set of eight)  
Silk paper  
JE 5331  
9 cm high





2



1



3



7



4



5



6



8

**1. Dove**  
Aluminium wire  
Code: RBC 35 D  
7.5 x 7.5 cm

**2. Angel**  
Aluminium wire  
Code: RBC 35  
9.5 x 10.5

**3. Star**  
Aluminium wire  
Code: RBC 280  
11 cm dia

**4. Christmas star**  
Recycled pine wood  
Code: JE 5359  
8.5 cm dia

**5. Deer**  
Recycled pine wood  
Code: JE 5360  
11 x 10.5 cm

**6. House**  
Recycled pine wood  
Code: JE 5357  
8.5 x 7 cm

**7. Star**  
Natural  
Code: TC 487  
18 x18 cm

**8. Christmas tree**  
Recycled pine wood  
Code: JE 5361  
9.5 x 11 cm





**1. Star ornament** (set of six)  
Silk paper  
Code: JE-5336  
7.5 cm dia

**2. Star ornament** (set of six)  
Silk paper  
Code: JE-5337  
9 cm dia

**3. Star ornament** (set of three)  
Coconut leaf  
Code: KP 1528  
8 cm dia

**4. Star ornament** (set of three)  
Coconut leaf  
Code: KP 1529  
8 cm dia

**5. Dove ornament** (set of four)  
Cotton paper  
Code: JE 5348  
2.5 x 2.5 cm

**6. Origami star** (set of five)  
Screen print on jute paper  
Code: BHP 3385  
8 cm dia



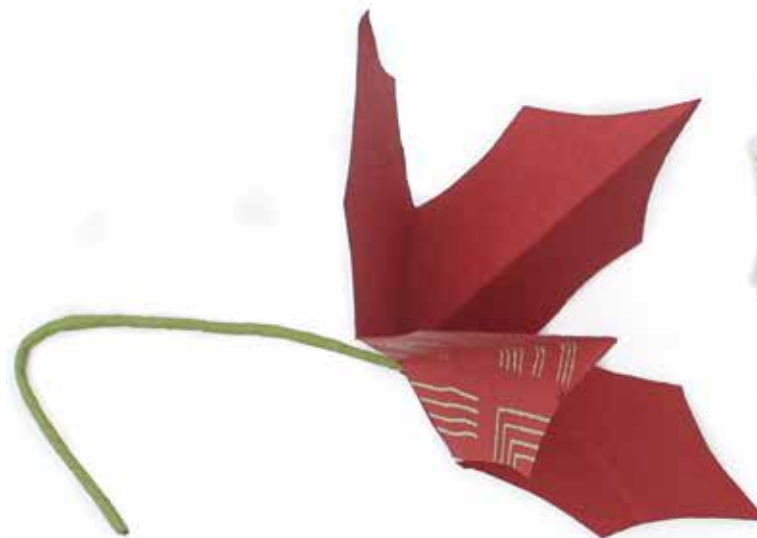




2



1



6



**1. Star**  
Paper mache  
Code: BNF 3462  
8 x 8 cm

**2. Heart**  
Paper mache  
Code: BNF 3460  
7 x 8 cm

**3. Ball**  
Paper mache  
Code: BNF 3463 R  
7 x 6.5 cm

**4. Ball**  
Paper mache  
Code: BNF 3463  
7 x 6.5 cm

**5. Ball**  
Paper mache  
Code: BNF 3463  
6.5 x 7 cm

**6. Leaf tag** (set of five)  
Handmade paper  
Code: JE-5328  
23 cm high



3



4



5



# garlands



1



2



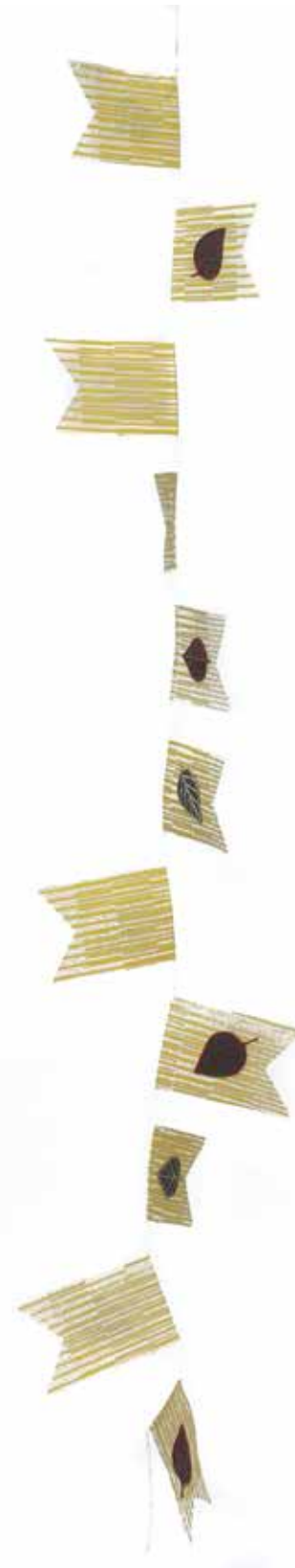
3



4



5



6



7



8

## 1. Leaf garland

Silk paper  
Code: JE-5332  
150 cm long

## 2. Leaf garland

Silk paper  
Code: JE-5333  
130 cm long

## 3. Garland

Recycled sari and waste paper  
Code: SME 0319  
180 cm long

## 4. Garland

Recycled sari and waste paper  
Code: SME 0320  
180 cm long

## 5. Garland

Jute paper  
Code: SHP PP 26/2/17  
150 cm

## 6. Leaf garland

Jute paper and twine  
Code: BNF 3452  
120 cm long

## 7. Hanging goat garland

Bamboo, paper and twine  
Code: BNF 3451  
146 cm long

## 8. Star garland

Coconut leaf  
Code: KP 1527  
240 cm long





**1. Star garland**  
Natural coconut leaf  
Code: KP 1525  
245 cm long

**2. Star garland**  
Golden and silver colored coconut leaf  
Code: KP 1526  
185 cm long

**3. Star garland**  
Red and natural colored coconut leaf  
Code: KP 1527  
240 cm long

**4. Star garland**  
Gold and natural colored coconut leaf  
Code: KP 1531  
210 cm long

**5. Flower garland**  
Keya leaf rose  
Code: KP 1516  
220 cm long

**6. Flower garland**  
Keya leaf rose  
Code: KP 1517  
220 cm long



1

2

3

4

5

6





All our stationery items are made from locally available raw materials, such as hemp, waterhyacinth, jute, etc.



stationery



# greeting cards



1



2



3



4



5



6



7



5



6



7

**1. Greeting card**  
Cotton paper with batik fabric  
Code: BNF-3420 green  
17 x 12 cm

**2. Greeting card**  
Cotton paper with batik fabric  
Code: BNF-3420 blue  
17 x 12 cm

**3. Post card** (set of three)  
Blue batik fabric with cotton card  
Code: BNF-3423  
10 x 15 cm

**4. Greetings card** (set of two)  
Cotton, jute with gold triangle print  
Code: BNF-3425  
11 x 15 cm

**5. Post card**  
Water hyacinth fibre, handmade paper  
Code: BHP 3422-B  
15 x 11 cm

**6. Post card**  
Water hyacinth fibre, handmade paper  
Code: BHP 3422-A  
15 x 11 cm

**7. Post card**  
Water hyacinth fibre, handmade paper  
Code: BHP 3422  
15 x 11 cm





1



4



7



2



5



3



6



8



9



11



10



12

#### 4. Sleeping baby card

Jute and silk paper  
Code: JE 5286 B  
14 x 14 cm

#### 5. Baby shower card

Cotton and silk paper  
Code: JE 5280 B  
14 x 14 cm

#### 6. Welcome baby card

Cotton and silk paper  
Code: JE 5283  
15 x 11.5 cm

#### 7. Baby boy card

Cotton and silk paper  
Code: JE 5292  
11.5 x 15 cm

#### 8. Baby girl card

Cotton and silk paper  
Code: JE 5291  
15.5 x 11.5 cm

#### 9. Baby girl greeting card

Cotton and silk paper  
Code: JE 5297  
17 x 12 cm

#### 10. Welcome baby card

Cotton and silk paper  
Code: JE 5282  
14 x 14 cm

#### 11. Baby boy greeting card

Cotton and silk paper  
Code: JE 5296  
17 x 12 cm

#### 12. Baby shower card

Cotton and silk paper  
Code: BNF 3390  
12 x 12 cm

#### 1. Baby card

Jute and silk paper  
Code: JE- 5286 P  
14 x 14 cm

#### 2. Baby shower card

Cotton and silk paper  
Code: JE 5280 P  
14 x 14 cm

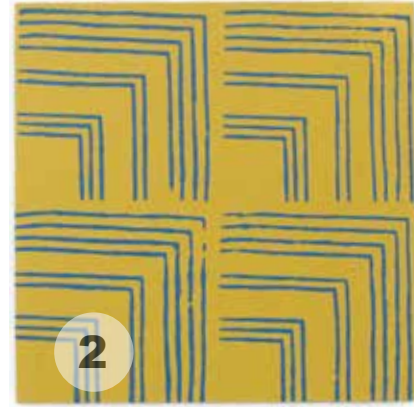
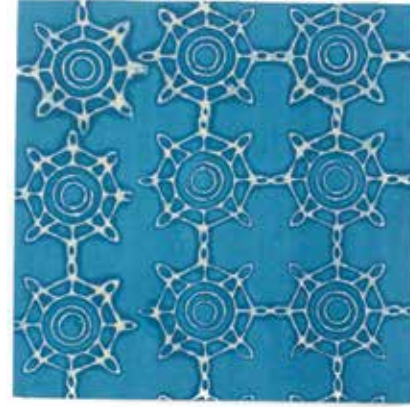
#### 3. Welcome baby card

Cotton and silk paper  
Code: JE 5280 B  
15 x 11.5 cm





1



2



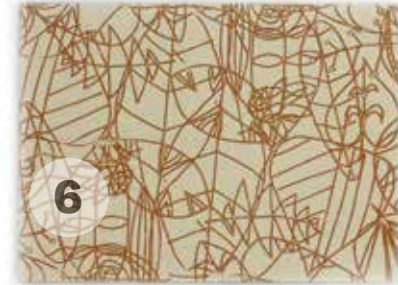
3



4



5



6



7

**1. Greeting card** (set of three)  
Batik on jute paper  
Code: SHP PP 16/2/17  
14 x 14 cm

**2. Greeting card** (set of three)  
Block on jute paper  
Code: SHP PP 12/2/17  
12 x 12 cm

**3. Greeting card** (set of three)  
Screen print on jute paper  
Code: SHP PP 13/2/17  
14 x 14 cm

**4. Greeting card**  
Jute paper  
Code: BNF 3419  
12 x 17 cm

**5. Greeting card**  
Jute embossed paper  
Code: BNF 3426  
11 x 15 cm

**6. Leaves card**  
Jute paper with screen print  
Code: BNF 3424 A  
11 x 15 cm

**7. Leaves card**  
Cotton paper with screen print  
Code: BNF 3424 B  
11 x 15 cm





### 1. Christmas tree card

Jute paper  
Code: BHP 3419  
15 x 11.5 cm

### 2. Christmas tree card

Jute paper  
Code: BHP 3420  
11 x 15 cm

### 3. Post card

Jute paper, water hyacinth  
Code: BHP 3432  
15 x 11 cm

### 4. Post card

Jute paper, water hyacinth  
Code: BHP 3432-B  
15 x 11 cm

### 5. Christmas card

Cotton paper with batik fabric decorated  
Code: BNF 3422  
11 x 15 cm

### 6. Christmas card

Jute paper  
Code: BNF 3431  
11 x 15 cm

### 7. Christmas card

Cotton paper  
Code: BNF 3432  
11 x 15 cm

### 8. Christmas card

Cotton paper  
Code: BNF 3430  
11 x 15 cm

### 9. Tree Pop-up card

Cotton paper  
Code: JE 5339  
16.5 x 11.5 cm

### 10. Christmas star card

Cotton paper  
Code: BNF 3437  
8 x 8 cm







### 1. Greeting card best wishes

Water hyacinth paper  
Code: JE 5353 - LG  
15 x 11 cm

### 2. Greeting card joy

Water hyacinth paper  
Code: JE 5353 - B  
15 x 11 cm

### 3. Merry Christmas card

Water hyacinth paper  
Code: JE 5298  
17 x 12 cm

### 4. Greeting card Merry and Bright

Water hyacinth paper  
Code: JE 5353 - OG  
15 x 11 cm

### 5. Greeting card Rejoice

Water hyacinth paper  
Code: JE 5353 - R  
15 x 11 cm

### 6. Card Rejoice

Water hyacinth paper  
Code: JE 5355  
15 x 11 cm

### 7. Dove card

Water hyacinth paper  
Code: JE 5323  
15 x 11 cm

### 8. Christmas card

Water hyacinth paper  
Code: JE 5345  
15 x 11 cm

### 9. Greeting card

Water hyacinth & cotton paper  
Code: JE 5352  
17 x 12 cm

### 10. Christmas card

Water hyacinth & silk paper  
Code: JE 5349  
15 x 11 cm

### 11. Merry Christmas card

Water hyacinth paper  
Code: JE 5327  
14 x 14 cm





1



6



2



3



4



5

**1. Greeting card** (Set of 4)  
Cotton paper  
Code: SHP : PP 15/2/17  
14 x 14

**2. Greetings card**  
Red twine decorated  
Code: BNF-3428  
11 x 15 cm

**3. Greetings card**  
Pink paper twine decorated  
Code: BNF-3429  
11 x 15 cm

**4. Greeting card** (set of three)  
Jute paper  
Code: SHP : PP 24/2/17  
11 x 15 cm

**5. Christmas card**  
Embossed paper  
Code: BNF-3427  
11 x 15 cm

**6. Ball decorative Pop-up card**  
Jute and silk paper  
Code: JE- 5356 A  
16.5 x 11.5 cm



# journals



1



2



3



4



6

## 1. Folding notebook

Recycled newspaper  
Code: BHP 3372  
21 x 15 cm

## 2. Folded notebook

Hogla mat cover  
Code: BHP 3371  
21 x 15 cm

## 3. Folding notebook

Recycled newspaper  
Code: BHP 3373  
15 x 11 cm

## 4. Journal

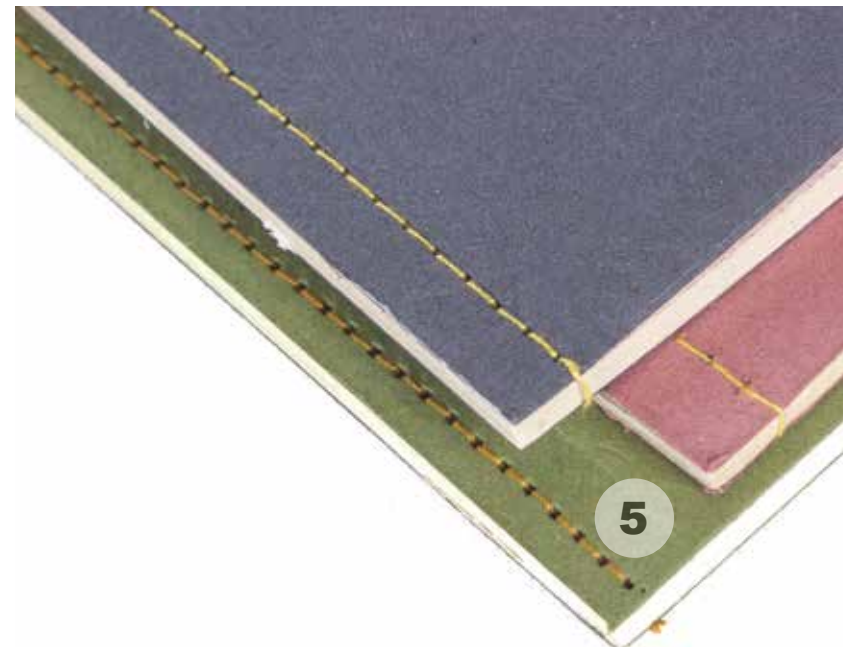
Leather cover  
Code: BHP 3374  
21 x 15 cm

## 5. Journal

Jute paper  
Code: BHP 3355 blue, pink, green  
23 x 16 cm

## 6. Note book (triangle)

Natural paper  
Code: BNF-3477  
11 x 22 cm



5





1



2



3



4



5



6

**1. Note book** (batik fabric)  
Jute paper with batik fabric decorated  
Code: BNF-3407  
18.5 x 11 cm

**2. Folded note book** (batik fabric)  
Wheatstraw paper with batik fabric decorated  
Code: BNF-3408  
18 x 13 cm

**3. Note book** (batik fabric)  
Cotton and jute paper  
with batik fabric decorated  
Code: BNF-3403  
18.5 x 11 cm

**4. Folded note book** (batik fabric)  
Recycled and wheatstraw paper  
with batik fabric decorated  
Code: BNF-3411  
13 x 18 cm

**5. Note book** (batik fabric)  
Cotton and jute paper  
with batik fabric decorated  
Code: BNF-3406  
18.5 x 11 cm

**6. Folded note book** (batik fabric)  
Recycled and wheatstraw paper  
with batik fabric decorated  
Code: BNF-3409  
13 x 18 cm

**7. Folded note book** (batik fabric)  
Recycled and wheatstraw paper  
with batik fabric decorated  
Code: BNF-3410  
13 x 18 cm



7





1



2



7

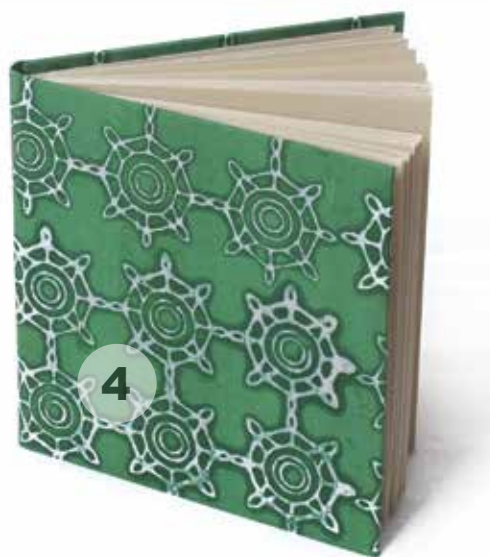
**1. Note book** (screen print)  
Handmade paper  
Code: SHP PP 06/2/17  
15 x 21 cm

**2. Note book** (screen print)  
Handmade paper  
Code: SHP PP 10/2/17  
11 x 15 cm

**3. Note book** (screen print)  
Handmade paper  
Code: BNF 3414  
13 x 18 cm



3



4



8

**4. Note book** (batik)  
Handmade paper  
Code: SHP PP 04/2/17  
14 x 14 cm

**5. Note book** (screen print)  
Handmade paper  
Code: BNF 3415  
13 x 18 cm

**6. Note book** (screen print)  
Handmade paper  
Code: SHP PP 07/2/17  
15 x 21 cm

**7. Note book** (screen print)  
Handmade paper  
Code: SHP PP 03/2/17  
12 x 19 cm

**8. Note book** (block print)  
Handmade paper  
Code: SHP PP 02/2/17  
18 x 18 cm

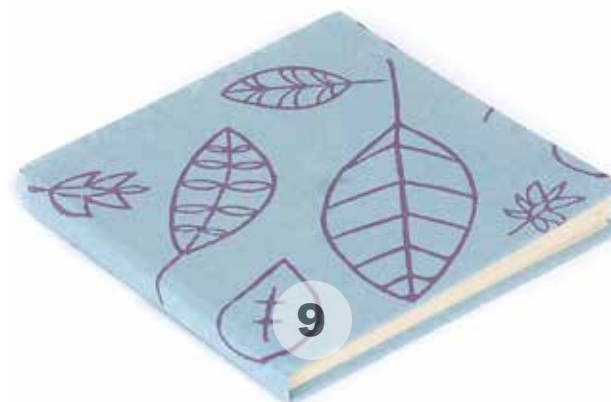
**9. Note book** (block print)  
Handmade paper  
Code: SHP PP 11/2/17  
14 x 14 cm



5



6



9



# gift boxes



1



2



3



4



7



5

6

**1. Folding box** (butterfly),  
Jute paper  
Code: BNF 3468  
4.5 x 4.5 x 5.5 cm

**2. Folding box** (flower)  
Jute paper  
Code: BNF 3469  
5 x 5 x 5 cm

**3. Folding box** (butterfly)  
Pineapple paper  
Code: BNF 3470  
5 x 5 x 5 cm

**4. Box**  
Jute marbling paper  
Code: SHP : PP 22A/2/17  
5 x 5x 5 cm

**5. Box**  
Paper batik  
Code: SHP : PP 22/2/17  
14 x 14 cm

**6. Gift box**  
Fabric batik  
Code: BNF 3412  
14 x 14 x 7 cm

**7. Triangle box**  
Paper  
Code: SHP : PP 25/2/17  
9 x 5.5 x 7 cm

**8. Gift box** (set of two)  
Leather  
Code: SHP : PP 38/2/17  
7.5 x 6 x 5 cm



8



# gift bags



## 1. Gift bag

Batik print on jute paper  
Code: SHP PP 20/2/17  
31 x 27 x 10 cm

## 2. Gift bag

Batik print on cotton paper  
Code: SHP PP 19/2/17  
27 x 18 x 6 cm

## 3. Gift bag

Screen print on paper  
Code: BHP 3396 B  
15 x 11 cm

## 4. Gift bag

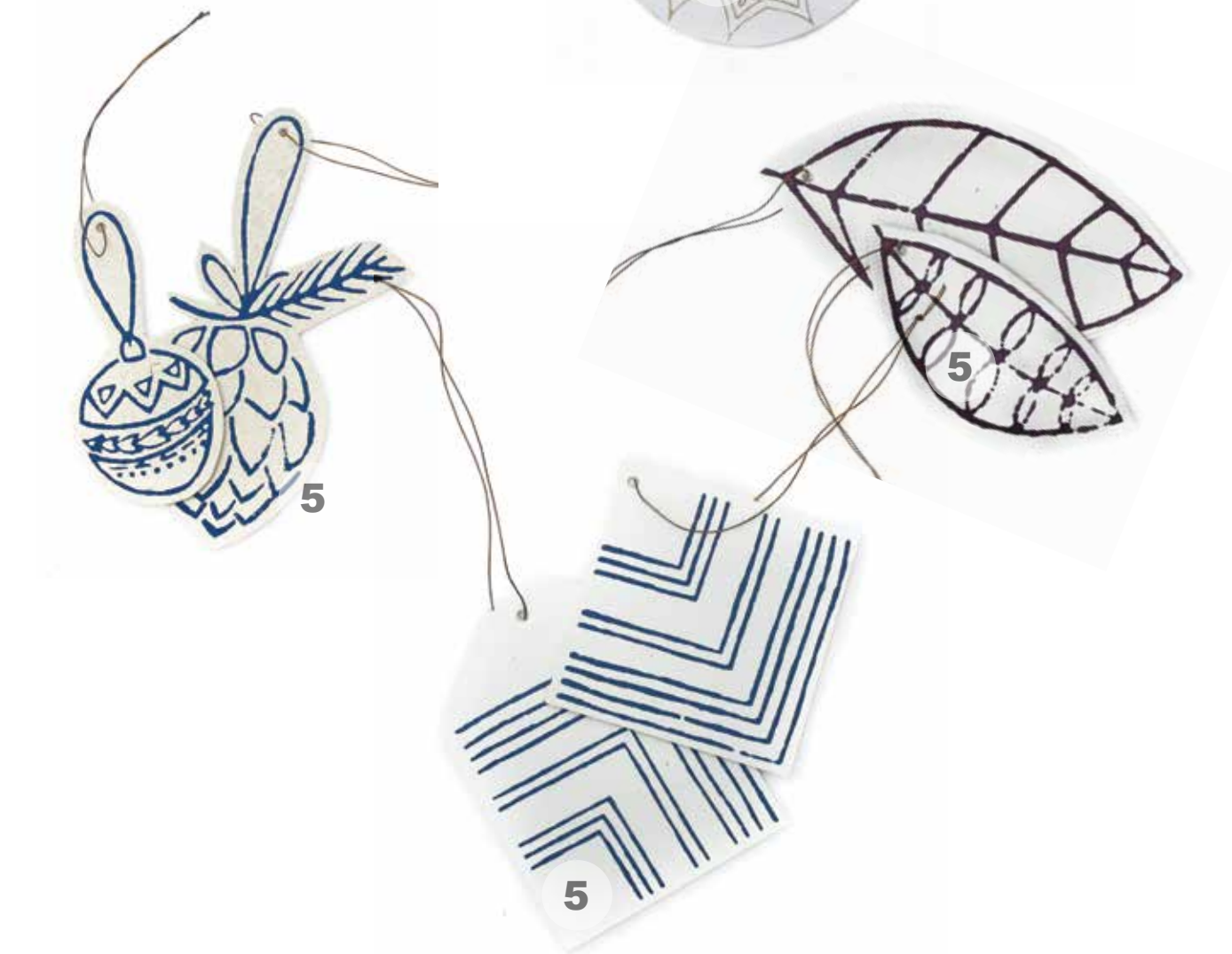
Screen print on paper  
Code: BHP 3396  
15 x 11 cm

## 5. Gift bag (set of 3)

Cotton handmade paper with batik  
Code: SHP PP 27/2/17  
10 x 8.5 x 5 cm







# gift tags

## 1. Round tag star

Cotton paper  
Code: BNF 3442  
5.5 cm dia

## 2. Round tag bear

Cotton paper  
Code: BNF 3441  
5.5 cm dia

## 3. Round tag star

Cotton paper  
Code: BNF 3439  
7 cm dia

## 4. Round tag (set of two)

Cotton paper  
Code: BNF 3440  
7 cm dia

## 5. Ball tag (set of six)

Cotton paper  
Code: SHP PP 29/2/17

## 6. Leaf tag (set of three)

Cotton paper  
Code: BNF 3443  
9 x 6 cm dia

## 7. Wedding tag (set of two)

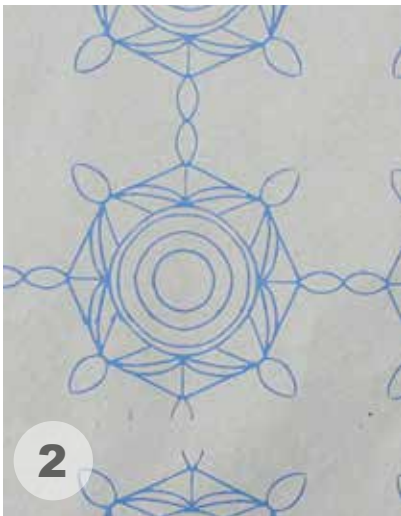
Cotton paper  
Code: BHP 3425  
13 cm







1



2



3



4



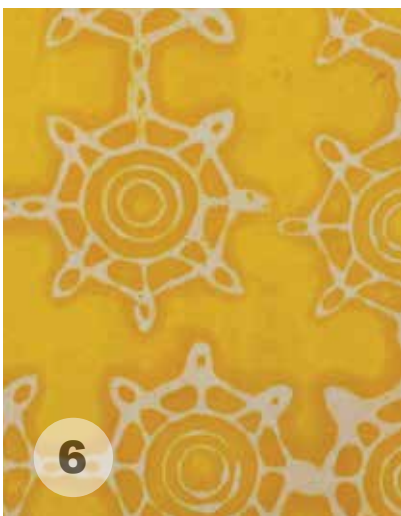
5



6



7



6



6



8

# wrapping paper

**1. Silk wrapping paper**  
Green triangle screen print  
Code: BHP 3429-O  
82 x 52 cm

**2. Wrapping paper**  
Lotus screen print  
Code: BHP-3426  
88 x 48 cm

**3. Jute wrapping paper**  
Golden lotus wax print  
Code: SHP PP 30-2-17  
88 x 48 cm

**4. Wrapping paper**  
Green triangle screen print  
Code: BHP 3425-G  
88 x 48 cm

**5. Wrapping paper**  
Golden lotus screen print  
Code: BHP-3427  
88 x 48 cm

**6. Batik wrapping paper** (set of three)  
Christmas star screen print  
Code: SHP PP 21/2/17  
88 x 48 cm

**7. Wrapping paper**  
Pink lotus screen print  
Code: BHP-3426  
88 x 48 cm

**8. Wrapping paper**  
Golden kalka screen print  
Code: BHP 3428  
88 x 48 cm



# terms and conditions

1

## ORDER CONFIRMATION

1 For Prokritee to start production, please confirm the order ASAP, within a week latest.

2 We take up production only on receipt of your confirmation and receipt of the 50% Advance Payment.

3 Delay in Order confirmation can lead to change in unit prices subject to volatility in the supply of our raw materials.

4

## MINIMUMS

1 Minimum Order Shipment Value is FOB US \$2,000.

2 Minimum Order Quantity of 100 pieces per different product, depending on the specific product.

3 Minimums for exclusivity for a particular design in a particular region can be discussed, depending on the size of the region and market.

2

## PAYMENT TERMS

1 50% Advance & Balance 50% CAD (Cash Against Documents), Telegraphic Transfer (TT), LC at sight (no deferred LC). The final 50% will require to be made upon confirmation of product quality by the client's agent.

2 All Advance Payments to be sent by SWIFT.

3 Sample Development Cost can be sent by SWIFT.

4 All bank charges in the client's country will be to the account of the client.

5

## LABELLING & PACKAGING

1 Client to send L&P Instructions latest within 2 weeks after the order confirmation.

2 Any delay here could adversely effect production time and subsequent order delivery.

3 Prices are inclusive of normal wash care & composition label +sea-worthy export carton packaging, with a carton gross weight of approximately 15 - 20 KG maximum.

4 Any special labelling & packaging requirements would cost extra.

3

## DELIVERY

1 The normal production period varies between 6 to 8 weeks after receipt of the advance payment, depending on the order assortment and the time when the order is placed.

2 For repeat orders it is 4 to 6 weeks.

3 In view of the volatile prices of raw materials, repeat order prices need to be reconfirmed (which will be maintained as far as possible) before order placement.

6

## ADVANCE PRODUCTION SAMPLES (APS)

1 We can courier your representative APS as Bonafide Free Samples to a maximum of one piece of each item in about 4 weeks after receipt of the 50% advance payment.

2 If APS / Salesmen Sample requirements exceed 0.50% of the order value, the difference would be borne by the client as Sample Development Charges.

3 The Courier costs involved would be for the account of the client.

4 Client to advise their Courier A/C No. Details for dispatch of New / Advance Production Samples.

7

## CUSTOMISED DEVELOPMENTS

1 On receipt of Customised Development requirements, we will revert with:

- Cost of Development Project;
- Stages & Time Schedule for Development & Sampling;
- Estimated Selling Price for the product involved;
- Minimums required For Sampling & Production;
- Order Delivery Time when different from our normal time;
- Queries, remarks and constraints, if any.

2 On finalisation of the Development Project, the client is to send the samples project development cost in advance by SWIFT and their courier account number for sample despatch.

3 All sample courier costs will be for the client's account.

4 The development time schedule varies between 2 to 3 weeks depending on the range and processes involved.

8

## QUALITY

1 For any special tests like AZO, CE testing, light fastness, wash care etc. we will charge extra as per the actual costs involved.

2 Acceptable colour variation should be 5 to 10%.







**Prokritee Headquarters**

House # 1/1, Asadgate Road, Block-A

Mohammadpur, Dhaka 1207

Bangladesh

+88 02 5815 3405

[contact@prokritee.com](mailto:contact@prokritee.com)

[www.prokritee.com](http://www.prokritee.com)